

-
- Customer:

Technical Data Sheet

TOP View RGB LED (5050)

For: IF= 3*20mA

Contents

- 1. Features**
- 2. Applications**
- 3. Package outline dimension**
- 4. Absolute maximum ratings**
- 5. Electrical-optical characteristics**
- 6. Typical electro-optical characteristics curves**
- 7. Tapping specifications**
- 8. Package method**
- 9. BIN code description**
- 10. BIN range**
- 11. Reliability test items and conditions**
- 12. Precautions for use**
- 13. Hazard substance analysis**

Customer confirm	Approved by	Issued by

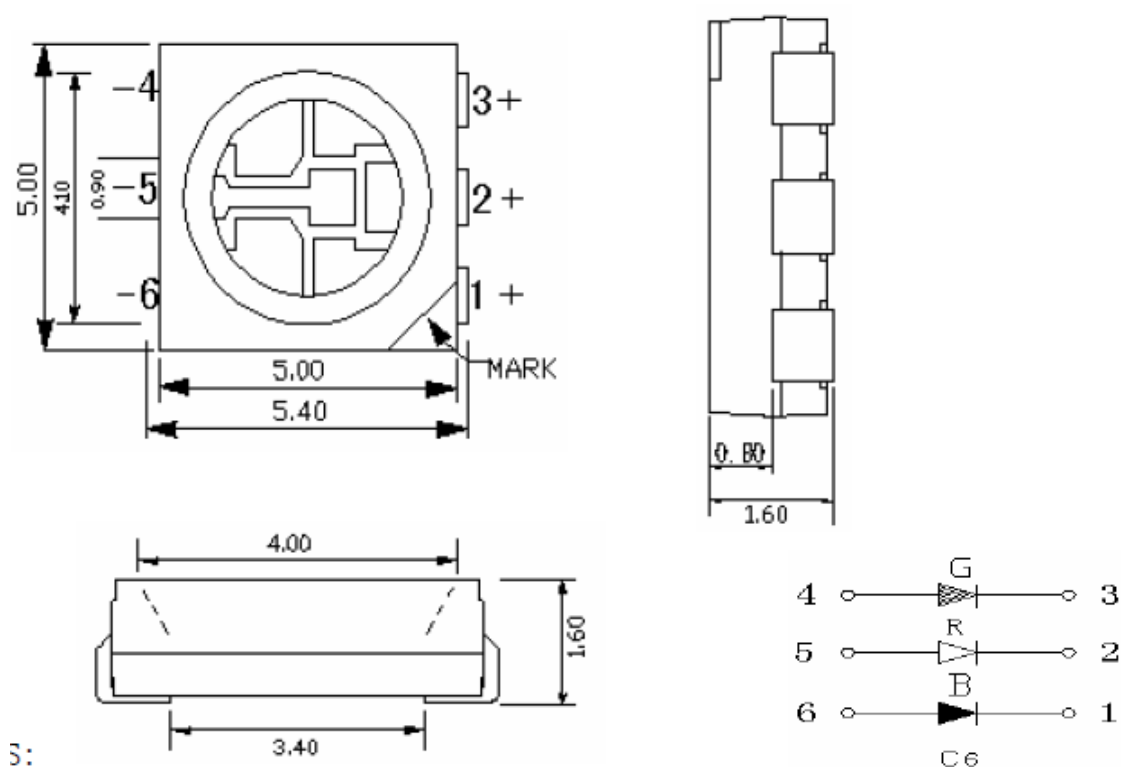
※ **Features:**

1. Package: 5.0*5.0*1.5mm (TOP view RGB LED)
2. Soldering methods: All SMT assembly methods
3. Comply ROHS standard.

※ **Applications:**

1. LCD back light.
2. Mobile phones: LCD,
3. Status indicators: Consumer & industrial electronics.
4. General use.

※→**Package Outline Dimension:**



NOTES:

1. All dimensions are in millimeters .
2. Tolerance is ± 0.10 mm unless otherwise specified.
3. Specifications are subject to change without notice.

※ **Absolute Maximum Ratings(Ta=25℃)**

Parameter	Symbol	Rating			Unit
Power Dissipation	Pd	R	G	B	mW
		81	114	114	
Forward Current	I _F	3*20			mA
Peak Forward Current * 1	I _{FP}	3*100			mA
Reverse Voltage	V _R	5			V
Soldering Temperature	Tsol	260 (for 5 seconds)			℃
Operating Temperature	Topr	-20℃~70℃			-
Storage Temperature	Tstg	-30℃~80℃			-
Electrostatic discharge	ESD	2000			V

* 1 I_{FP} condition: pulse of 1/10 duty and 0.1ms width.

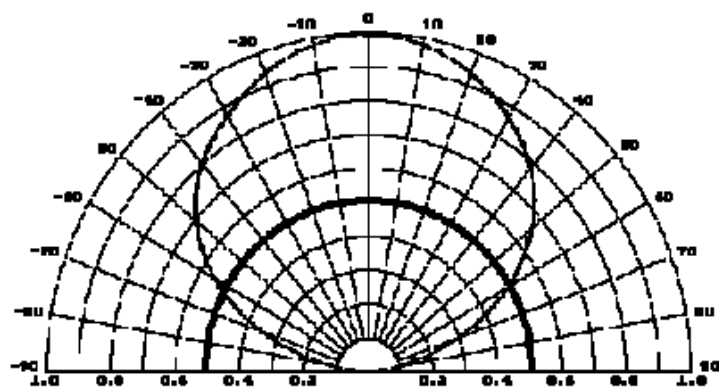
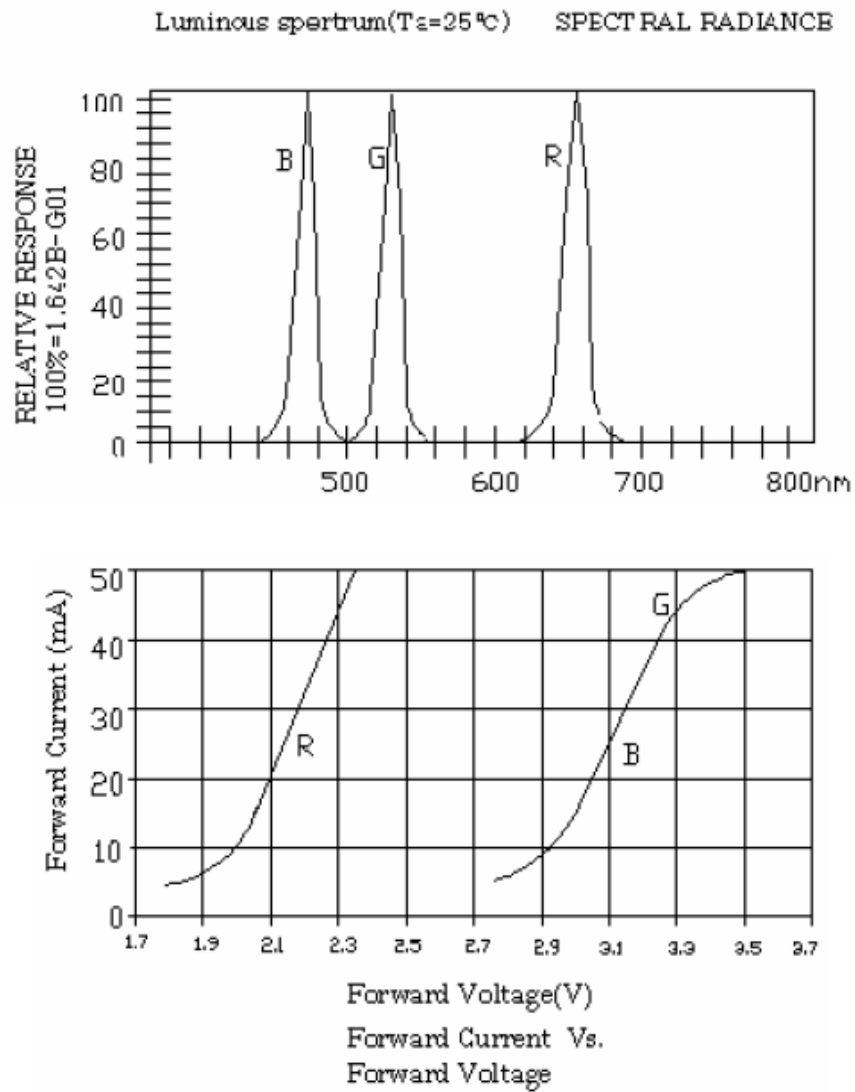
※ **Electrical-optical characteristics(Ta=25℃)**

Parameter	Test Condition	Symbol		Value			Unit
				Min.	Typ.	Max.	
Wavelength at peak emission	If=20mA	λ_{peak}	R	620	-	650	nm
			G	510		530	
			B	450		480	
Spectral half bandwidth	If=20mA	$\Delta \lambda$	R	-	20	-	nm
			G		30		
			B		25		
Dominant wavelength	If=20mA	λ_{dom}	R	-	624	-	nm
			G		517		
			B		467		
Forward voltage	If=20mA	V _f	R	-	2.0	-	V
			G		3.2		
			B		3.2		
Luminous intensity *1	If=20mA	I _v	R	-	530-685	-	mcd
			G		850-1105		
			B		210-273		
Viewing angle at 50% I _v	If=60mA	2 θ 1/2			-	120	--
Reverse current	V _R =5V	I _r			-	-	10

Note: 1. Tolerance of luminous intensity is $\pm 10\%$

2. Tolerance of forward voltage is $\pm 0.05\text{V}$

■ Typical Electro-Optical Characteristics Curves



※ **Reliability test items and conditions:**

No.	Test Item	Test Conditions	Sample size	Ac/Re
1	Operation Life	Test If=DC 3*20mA Temp: Room temperature Test time=1000hrs	22	0/1
2	High Temperature High Humidity	Temp. =+85℃ RH=85%HR Test time=1000hrs	22	0/1
3	Thermal Shock	-35℃ ~ +85℃ 20min 10s 20min Test Time=300cycles	22	0/1
4	High Temperature Storage	High Temp. =+85℃ Test time=1000hrs	22	0/1
5	Low Temperature Storage	Low Ta=-35℃ Test time=1000hrs	22	0/1
6	Temperature Cycle	-35℃ ~ +100℃ 15min 5min 15min Test Time=300cycle	22	0/1
7	Reflow Soldering	Operation heating: 260℃(Max.), within 10seconds. (Max.)	22	0/1

※ **Judgment criteria of failure for the reliability**

- Iv: Below 50% of initial values
- Vf: Over 20% of upper limit value
- IR: Over 2 times of upper limit value

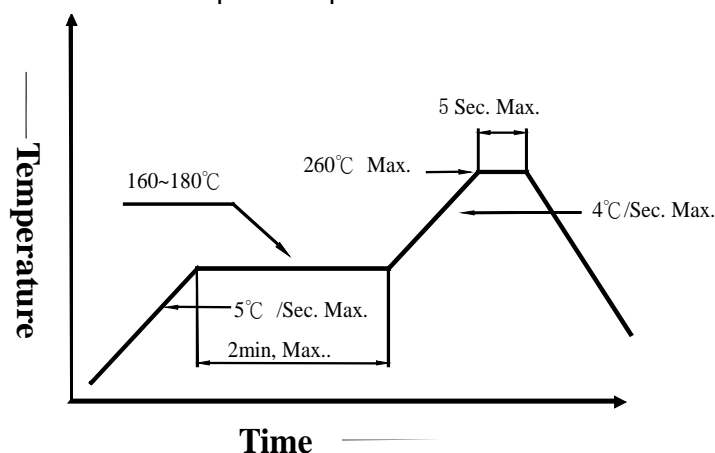
Note: Measurement shall be taken between 2 hours and after the test LED have been returned to normal ambient conditions after completion of each test.

※ **Precautions for use :**

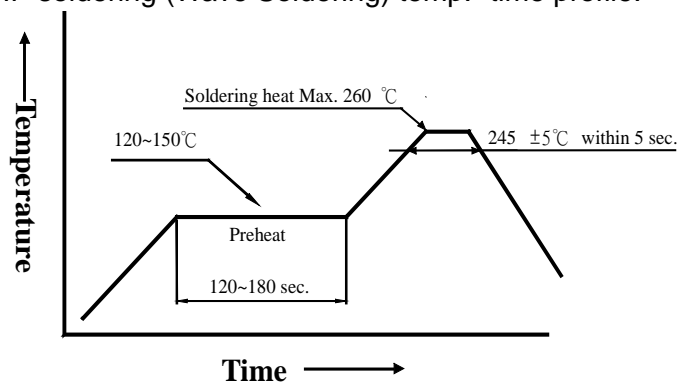
1. Customer must apply the current limiting resistor in the circuit so as to drive the LEDs within the rated current. Otherwise slight voltage shift maybe will cause big current change and burn out will happen.
2. Also, caution should be taken not to overload the LEDs with instantaneous high voltage at the turning ON and OFF of the circuit.
3. Storage:
 - 3.1 Don't open the moisture proof bag before ready to use the LEDs.
 - 3.2 The LEDs should be kept at 30℃ or less and 60%RH or less before opening the package. The max. storage period before opening the package is 1 year.
 - 3.3 After opening the package, the LEDs should be kept at 30℃/35%RH or less, and it should be used within 7 days.
 - 3.4 If the LEDs be kept over the conditions of 3.4, baking is required before mounting. Baking condition as below: 60±5℃ for 12 hrs.
60±5℃ for 12 hrs.
4. Soldering condition:
 - 4.1 Manual of soldering:

The temp. of the iron should be lower than 280°C and soldering within 3sec per solder-pad is to be observed.

4.2 Pb-free solder temp. -time profile

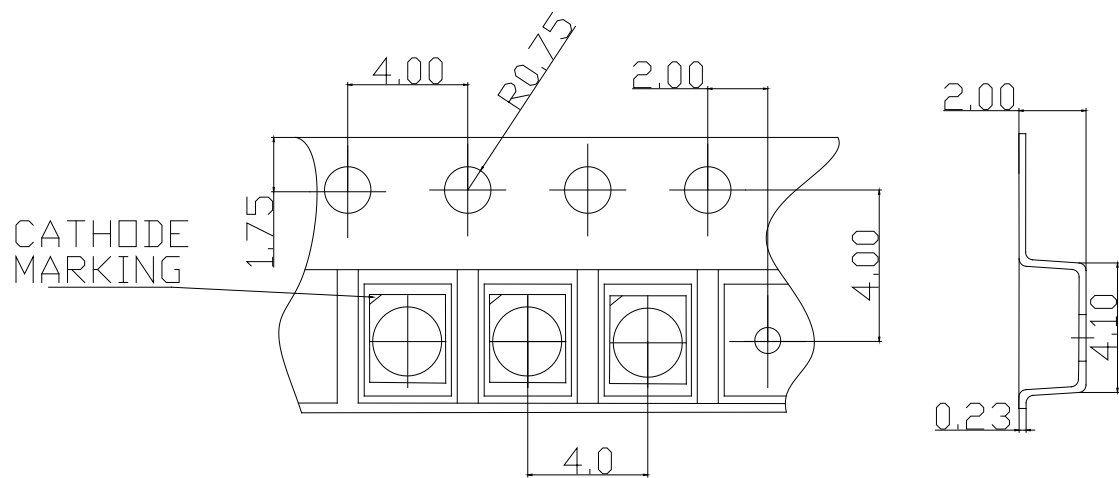


4.3 DIP soldering (Wave Soldering) temp. -time profile:



- Note:
- a) Reflow soldering should not be done more than two times.
 - b) Don't put stress on the LEDs when soldering.
 - c) Don't warp the circuit board before it have been returned to normal ambient conditions after soldering.

※Loaded quantity: 1000-3000 pcs/reel



※ Package Method:(unit:mm)

